

Uveitis / Conjunctivitis

Uveitis and conjunctivitis can both lead to worrisome ocular complications. Synechia, retinal scarring, and spreading of the infection to the cornea, lids, and tear ducts are some of the many exacerbations that untreated uveitis and conjunctivitis can potentially develop into. Certain autoimmune diseases, namely Rheumatoid Arthritis (RA) and Systemic Lupus Erythematosus (SLE) happen to have ocular manifestations in their early presentations, which further justifies the search for accurate and translatable uveitis and conjunctivitis models. From infectious to allergic and autoimmune uveitis/conjunctivitis, PharmaLegacy's long history and strong capabilities in inflammation/autoimmune disease models have strengthened our approaches to uveitis and conjunctivitis.

MODELS / SERVICES	Mouse	Rat	Rabbit	NHP	In vitro
Endotoxin-induced uveitis	●	●			
Experimental autoimmune uveitis	●	●			
Allergic conjunctivitis	●				
Bacterial conjunctivitis			●		

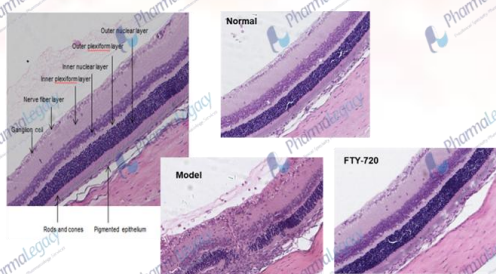
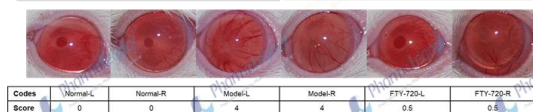
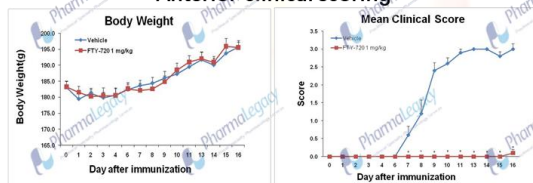
Experimental autoimmune uveitis

Model info:

Animal	Mouse (posterior uveitis) / Rat (anterior uveitis)
Induction	IRBP
Dosing route	Topical, intravitreal, suprachoroidal, systemic
Readout	① Anterior clinical scoring (rat) ② Fundus clinical scoring (mouse) ③ f-ERG (mouse, optional) ④ IR-OCT (mouse, optional) ⑤ Histology
Follow-up	2-4 weeks
Suitable indication	Uveitis

EAU in rat

Anterior clinical scoring



Bacterial conjunctivitis

Model info:

Animal	Rabbit
Induction	Bacterial infection
Dosing route	Systemic, topical, intracameral injection
Readout	① Conjunctivitis score ② Histology
Follow-up	1~2 weeks
Suitable indication	Bacterial conjunctivitis

